



Business Lunches

Available in the Waterline, or in one of our private rooms.

Grand Deck Private Dining Room

A single table seating 26,
or two tables of 22, a total of 44
(or any combination in between).

Glamour Bar

A single long table of up to 24.

Menu 1.

\$55 per person

An Italian banquet of antipasto, panzanella salad, slow cooked pork shoulder, fried gnocchi, and lamb leg in quince and balsamic with salsa verde

Menu 2.

Set menu @ \$55 per person

Local prawn & avocado cocktail w. roast tomato hollandaise

Eye fillet, potato gratin, zucchini w. toasted almond butter

Add shared cheese platters @ \$7 per person

Add individual desserts @\$12 per person

Menu 3.

Alternate drop @ \$65 per person

Black & blue yellowfin tuna, james squire 150 lashes pale ale & mustard sauce

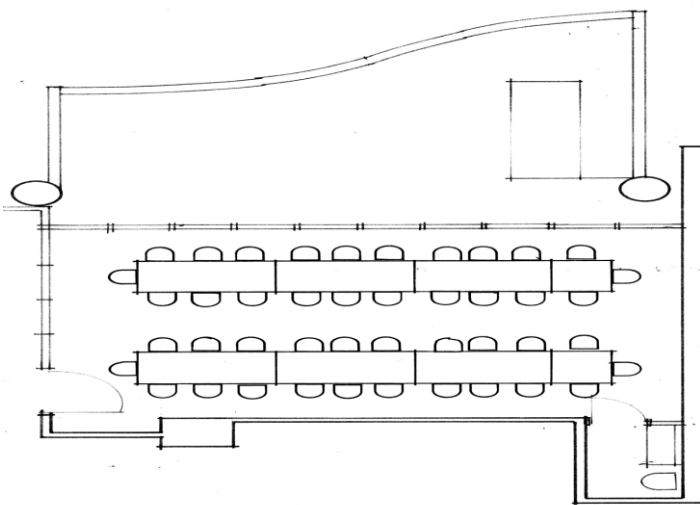
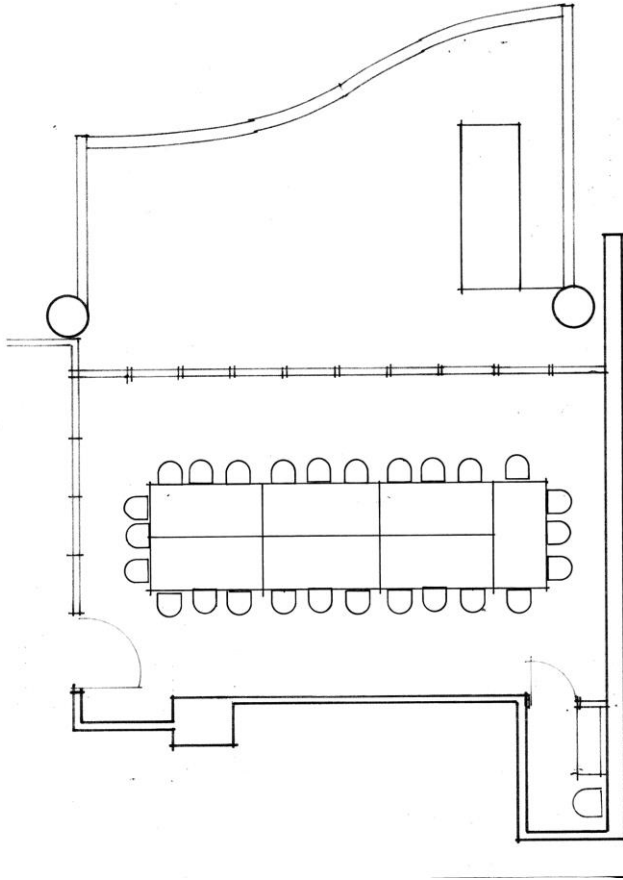
Thai beef salad w. coriander, mint, rice noodles, lime & palm sugar dressing

Grilled local fish fillet, avocado salad, beer battered fries

Rib on the bone, potato gratin, french beans, shiraz jus, fresh horseradish

Add shared cheese platters @ \$7 per person

Add individual desserts @\$12 per per



| | | | |
|-------------|---|----------|------------|
| design: 320 | ISSUE: REVISED TABLE 12 | REVISION | 2015.09 |
| | PROJECT: WHEELING RESTAURANT PRIVATE DINING | DATE | 2015.09 |
| | | SHEET | 56 OF 61 A |